

APPLICATIONS



PUMPING DISTANCE:

13 m
↑

WARRANTY



Product Code: 6101

Barcode:
EAN 3308815074429



Wired, audible and visual alarm box (5m cable)



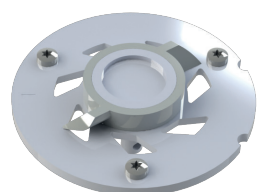
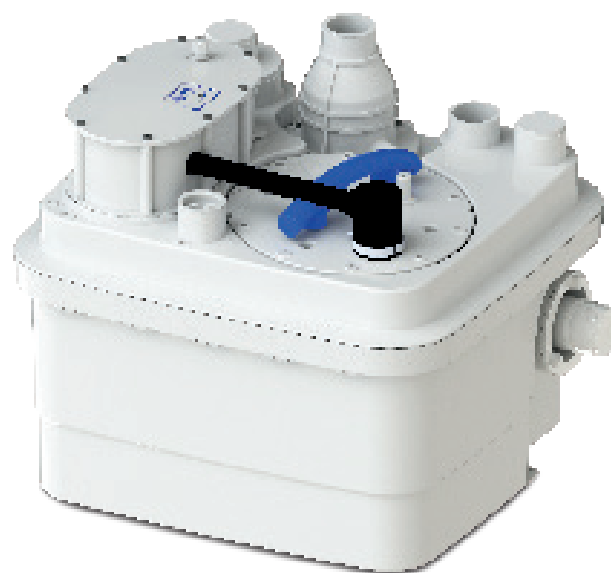
SANICUBIC® 1



Less chance of clogging due to the Pro X K2 grinder.
Motor and level sensors can be easily removed for maintenance.
Operational security with audible and visual alarm.



Compact
Several inputs available for **greater flexibility of installation.**
Discreet installation with a DN40 outlet (ext. 50 mm).



Pro X K2 grinder

ACCESSORIES

ISOLATION VALVES

Guillotine valves for inlet pipes
In order to comply with the regulations and to facilitate maintenance updates and checks, isolation valves must be installed on the black water inlets as well as on the outlet pipe.



For pipe 50 mm diameter DN50
Product Code: 1109
Barcode: EAN 3308815061030

For pipe 110 or 100mm Diameter DN100
Product Code: 1107
Barcode: EAN 3308815061023

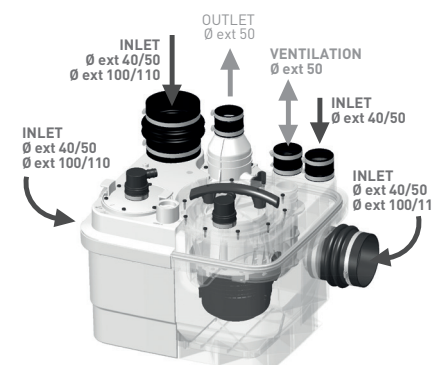
ACTIVATED CARBON FILTER

Neutralises odours.

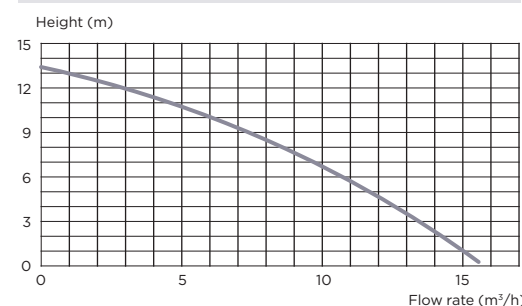


Can be used with SANICUBIC®
Product Code: 1108
Barcode: EAN 3308815076867

SEMI-TRANSPARENT VIEW



PUMP CURVE



TECHNICAL FEATURES

| TANK | |
|------------------------------------|---|
| Tank volume | 32 L |
| Ø inlet | • 1 inlet DN 40/50 (Ø ext. 40/50 mm) • 3 inlets DN 40/50/100/110 (Ø ext. 40/50/100/110 mm) |
| Ø Discharge pipework | DN 40 (ext. 50 mm) |
| Ø Ventilation | 50 mm |
| Maximum incoming water temperature | 70°C intermittently (5 mins max) |
| Possible connections | sewage water from several toilets, grey water from bathroom, kitchen, utility room |
| Flow rate | 13 m³/h |
| Maximum height (Q=0 l/min.) | 13 m |
| Maximum recommended height | 11 m |
| Voltage | 220-240 V / 50 Hz |
| Motor power | 1500 W |
| Maximum current | 13 A |
| On/off level | 140/80 mm |
| Alarm level | 210 mm |
| Weight (including accessories) | 21 kg |
| IP rating | IP67 |
| IP rating of control box | IPX4 |
| Electrical class | Single phase |

PACKAGING

- Lifting station with 1 motor
- Integrated non-return valves
- Alarm box