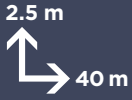


APPLICATIONS



PUMPING DISTANCE



WARRANTY



Product Code:
1054/1

Barcode:
EAN 3308819901394



SANISLIM®

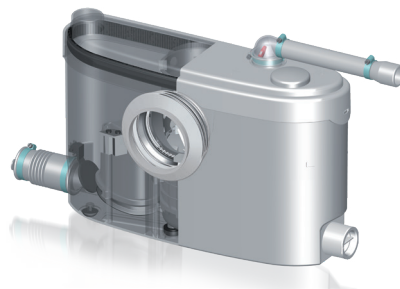


Slimline modern design fits easily behind most WCs.
Inlets on either side of the unit **for easy installation.**



Slimline unit that fits unobtrusively behind your WC.
Can take waste from a small bathroom despite its slimline dimensions.

TOP ACCESS TO THE BASKET



TECHNICAL FEATURES

Number of inlets available	4
Ø inlet	40 mm
Ø discharge pipework	22 mm
Motor power	400W
Voltage	220-240 V/50 Hz
Electrical class	Single phase
IP rating	IP44
Sound level	48.3 dB(A)
Weight	5.8 kg

PACKAGING

- SANISLIM®
- Non-return valve
- Connectors
- Carbon air filter

PUMP CURVE

