

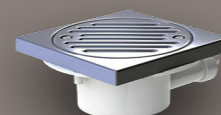
APPLICATIONS



PUMPING DISTANCE



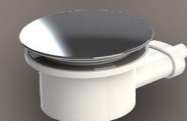
WARRANTY



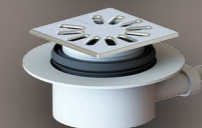
SANIFLOOR®+ 1
Pump and drain for tiled floors



SANIFLOOR®+ 2
Pump and drain for vinyl floors



SANIFLOOR®+ 3
Pump and drain for shower tray



SANIFLOOR®+ 4 ..wedi
Pump and drain for Wedi® former for tiling



SANIFLOOR® +

The **SANIFLOOR®** range has evolved and becomes the **SANIFLOOR®+** range.

The detection system integrated into the drain is now **wireless**, for easier installation!



Easy installation: Wireless communication between pump and drain.

Easy maintenance and easy to replace detection module.

Installation using small bore pipework.

Can be used with any shower.

High flow rate (30 L/min): perfect for rain shower.



Rain shower, anywhere, without major works.

Easy maintenance thanks to removable and cleanable hair drain (without screws).

HOW IT WORKS

The water entering the gully automatically activates the pump thanks to the internal drain detection system. The water is then sucked up and pumped towards the main pipe.

TECHNICAL FEATURES

Shower tray height	0 cm
Maximum distance between pump and waste (horizontal)	3 m
Maximum distance between pump and waste (vertical)	30 cm

PUMP FEATURES

High evacuation rate	30 L/min at 1 m
Ø Inlet	16 mm
Ø discharge pipework	32 mm
Voltage	220-240 V/50Hz
Maximum current	1.7 A
Motor power	400W
Electrical class	Single phase
Maximum temperature	35 °C

WASTE FEATURES

Exit diameter	16 mm
----------------------	-------

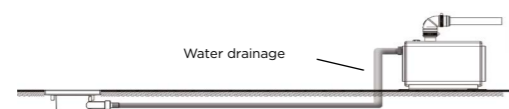
TOTAL HEIGHT

SANIFLOOR®+ 1 waste for tiled floors	68 mm
SANIFLOOR®+ 2 waste for vinyl floors	68 mm
SANIFLOOR®+ 3 waste for shower tray	57 mm
SANIFLOOR®+ 4 waste for Wedi former	60 mm
Materials used	ABS / stainless steel

The **SANIFLOOR+** offers 4 drain versions to adapt to all market floor coverings:

- **SANIFLOOR®+ 1** for tiled floors
- **SANIFLOOR®+ 2** for vinyl floors
- **SANIFLOOR®+ 3** for shower trays
- **SANIFLOOR®+ 4** for Wedi® former for tiling

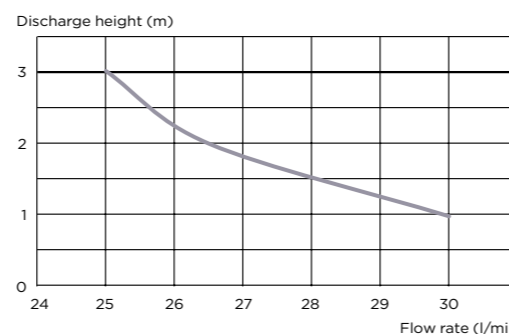
INSTALLATION DIAGRAM



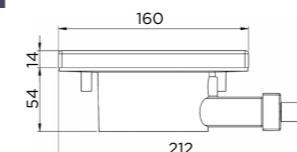
PACKAGING

- SANIFLOOR® + pump and waste
- Non-return valve
- Floor fixings provided

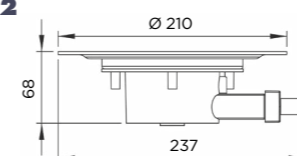
PUMP CURVE



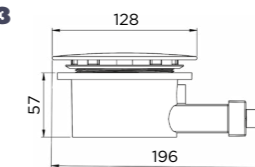
SANIFLOOR®+ 1



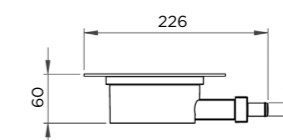
SANIFLOOR®+ 2



SANIFLOOR®+ 3



SANIFLOOR®+ 4 ..wedi



- SANIFLOOR+ 1**
Product Code: 6154
Barcode: EAN 3308815076232
- SANIFLOOR+ 2**
Product Code: 6155
Barcode: EAN 3308815076249
- SANIFLOOR+ 3**
Product Code: 6156
Barcode: EAN 3308815076164
- SANIFLOOR+ 4 Wedi**
Product Code: 6158
Barcode: EAN 3308815076256